

International Shipping Federation

The international employers' organisation for the shipping industry

ISF



ISF represents maritime employers at the International Labour Organization and IMO



What is ISF?

The International Shipping Federation (ISF) is the principal international employers' organisation for the shipping industry, representing all sectors and trades.

ISF membership comprises national shipowners' associations whose member shipping companies together operate two thirds of the world's merchant tonnage and employ a commensurate proportion of the world's 1.25 million seafarers.

Established in 1909, ISF is concerned with all labour affairs, manpower and training, and seafarers' health and welfare issues that may have an impact on international shipping.

ISF is actively engaged with the following international bodies:

- International Labour Organization (ILO)
- International Maritime Organization (IMO)
- World Health Organization (WHO)
- International Committee on Seafarers' Welfare (ICSW)
- International Organisation of Employers (IOE)

ISF also enjoys a close relationship with national maritime authorities throughout the world.

The national associations that form the membership of ISF appoint representatives to its expert committees, which are responsible for developing the international labour policy of maritime employers. This includes positions to be adopted on international maritime regulatory questions, industrial relations and training issues that may have an impact on the global shipping industry.



National shipowners' associations advise governments on ISF policy and participate in government delegations at international meetings



ISF helps national shipowners' associations advise companies of international developments

What areas does ISF cover?

For the past 80 years, ISF has played an influential role in the development, implementation and subsequent revision of all ILO maritime labour instruments. It was responsible for co-ordinating the position of maritime employers throughout the development and adoption of the ILO Maritime Labour Convention, 2006.

For the last 30 years, ISF has also played a similar role in the development and subsequent amendment of the IMO Standards of Training, Certification and Watchkeeping Convention (STCW) and other IMO regulations that may have a direct impact on maritime employers, including discussions relevant to the role of the 'human element' in maritime safety.

Through its institutional role as an ILO 'social partner', ISF is the opposite number of the International Transport Workers' Federation (ITF) with whose affiliates ISF member shipowners' associations make up the membership of the ILO Joint Maritime Commission, which is responsible for recommending the ILO minimum wage for Able Seafarers.

ISF also works very closely with its sister organisation, the International Chamber of Shipping (ICS), and the other partners in the Round Table of international shipping associations - BIMCO, Intercargo and Intertanko.

ISF is centrally involved in the co-ordination and representation of the global shipping industry's views on most issues affecting maritime employers, including:

- Employment standards
- Industrial relations
- Health, safety and accident prevention
- Living and working conditions
- Manning agency standards
- Manpower supply
- Maritime Labour Convention implementation
- Port welfare
- Safety culture
- Seafarers' rights
- Training and certification standards
- Wage cost information
- Work hour regulations



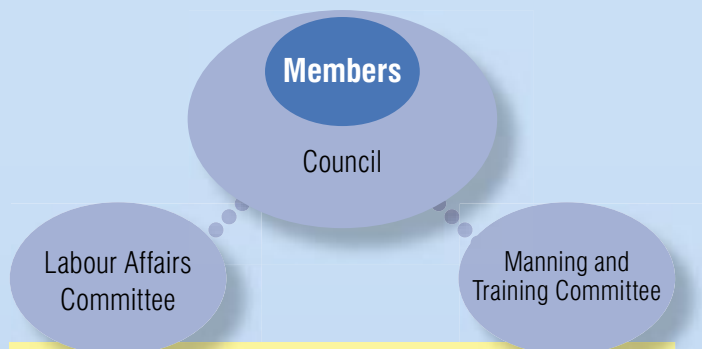
Publications

ISF publications and tools are an essential complement to government regulations and include the following:

Guidelines on Good Employment Practice
ILO MLC: a Guide for the Shipping Industry
Personal Training and Service Record Books
Training Record Books (for deck/engine cadets and ratings)
ISF Marlins English Language Test (PC based)
ISF Watchkeeper (work hour records) software



Organisational Structure



Members of the International Shipping Federation

The membership of ISF comprises national shipowners' associations from the following countries:

AUSTRALIA	GERMANY	NETHERLANDS
AUSTRIA	GREECE	NEW ZEALAND
BELGIUM	HONG KONG	NORWAY
BRAZIL	INDIA	PAKISTAN
BULGARIA	IRELAND	PHILIPPINES
CANADA	ISLE OF MAN	SPAIN
CHILE	ITALY	SWEDEN
CHINA	JAPAN	UNITED KINGDOM
CYPRUS	KOREA	UNITED STATES
DENMARK	KUWAIT	
FINLAND	LIBERIA	
FRANCE	MEXICO	

The ISF secretariat is provided by Maritime International Secretariat Services Limited (Marisec), which is owned jointly by ISF and its sister organisation, the International Chamber of Shipping.

Published by the International Shipping Federation
 12 Carthusian Street, London EC1M 6EZ



For further information, please contact:

The Secretary General
 International Shipping Federation
 12 Carthusian Street, London EC1M 6EZ

Telephone +44 20 7417 8844 Fax +44 20 7417 8877
 Email isf@marisec.org
 Website www.marisec.org

